

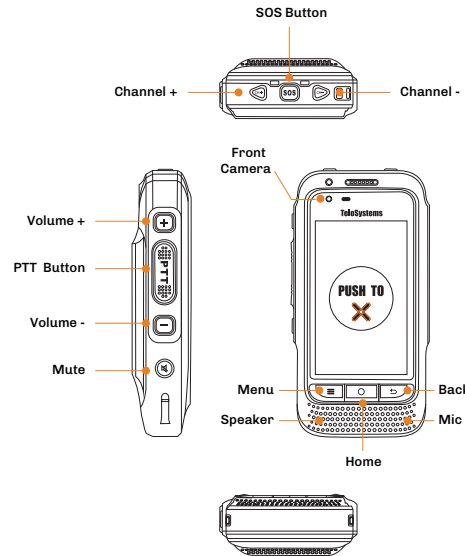
TE580P

Quick Start Guide

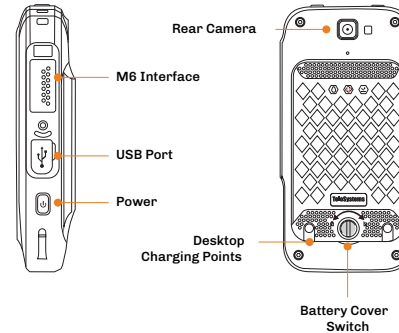


Thanks for choosing our product!
This Quick Start Guide Only applicable to: **TE580P**.
Before using the product, please read the Quick Start Guide to fully benefit from it.

Product introduction



Operating State	Indication
Standby	Green (Blinking)
Searching Network	Green (Fast Blinking)
Low Battery	Red (Blinking)
Charging	Red (Steady)
PTT Transmitting	Red (Steady)
PTT Receiving	Green(Steady)



Note

- Warranty period is 1 year for product from date of purchase.
- Warranty period is half a year for accessories from date of purchase.
- This product involves constant upgrading and/or improvement, our company reserves the right to change the specifications of software and/or hardware mentioned in this operating guide without any prior notice. The product specifications and information mentioned in the operating guide are for reference only.

TeloSystems

Tel: +86 755 86950766
E-mail: support@telosystems.com
Add: 6/F, No.42 Liuxian 1st Road, Bao'an District, Shenzhen, China
www.telosystems.com

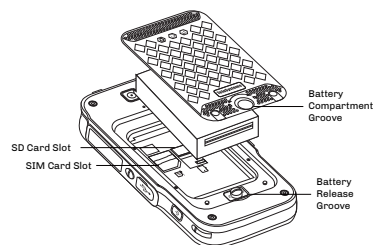
Check List

Please check the following accessories before you discard the packing material. Please contact your local dealer immediately if there is any missing or damage parts.

Accessories	Quantity
TE580P	1
USB Data Cable	1
Battery	1
Charging Plug	1
Quick Start Guide	1
Belt Clip	1

Before Use

- Release the battery cover lock, move the battery cover away.
- According to the indication, insert the SIM or SD card inside the SIM or SD card slot.
- Put the Battery into the slot.
- Lock the battery cover.

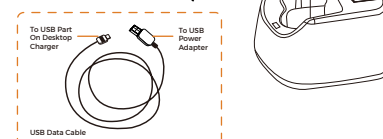


Basic Operation

- Power On**
Press the power on button for 3 seconds. Once the screen goes light up, the smart terminal is fully shut down.
- Power Off**
Press the power off button for 3 seconds. Once the screen goes blank, the smart terminal is fully shut down.
- Home**
Press home button to enter the home page
- Menu**
Press menu button to enter the setting page
- Back**
Press back button to return the last page
- Unlock**
 - Press menu button then press back button to unlock
 - Slide lock icon on the screen to unlock

Charging

Using Desktop Charger

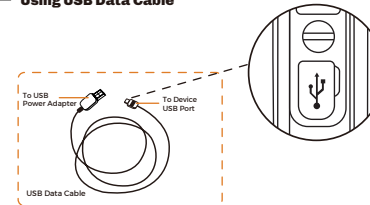


Connect the Desktop Charger and the Power Adapter with an USB Data Cable.

Red light on the desktop charger indicates battery charging in progress.

Green light on the desktop charger indicates fully charged.

Using USB Data Cable



Connect the LTE handheld and power adapter using the USB Data Cable.

Red light on the LTE handheld indicates battery charging in progress.

Green lights on indicates fully charged.

Notice:

Always use Telo Original batteries and chargers. The warranty does not cover damage caused by non-Telo batteries and/or chargers.

WARNING: DO NOT USE THE ABOVE TWO CHARGING METHODS SIMULTANEOUSLY.

IC Warning

This device complies with Industry Canada's licence-exempt RSSs. Operation is subject to the following two conditions:
(1) This device may not cause interference; and
(2) This device must accept any interference, including interference that may cause undesired operation of the device.
(3) This device is indoor use only when operate in frequency band 5150-5250MHz. Le présent appareil est conforme aux CNR d'Industrie Canada applicables aux appareils radio exempts de licence.

L'exploitation est autorisée aux deux conditions suivantes:

- L'appareil ne doit pas produire de brouillage, et
 - L'utilisateur de l'appareil doit accepter tout brouillage radioélectrique subi, même si le brouillage est susceptible d'en compromettre le fonctionnement.
- The information listed above provides the user with information needed to make him or her aware of a RF exposure, and what to do to assure that this radio operates within the exposure limits. The device complies with RF specifications when the device used at 25mm from body. Third-party belt-clips, holsters, and similar accessories used by this device should not contain any metallic components. Body-worn accessories that do not meet these requirements may not comply with RF exposure requirements and should be avoided.

Caution

- Risk of explosion, fire or chemical burns if battery is disassembled, crushed, stricken, trampled, short-circuited, incinerated or exposed to high temperature over 60°C.
- Don't use damaged or weeping battery.
- Keep the battery dry and out of Children's reach.
- Properly dispose of failure batteries in accordance with local regulations.
- Although your device is quite sturdy, it is a complex piece of equipment and can be broken. Avoid dropping, hitting or bending, or sitting on it.
- Make sure the charger/USB port, microSD card/SIM card slot covers are properly seated, with no foreign objects obstructing the seals.
- Do not use the charger/USB port for charging, data transmission, etc. until the phone is completely dry.
- Do not store the device under any circumstance containing electronic erosive material.
- Avoid to pull the device up by holding the antenna or accessories.
- Please power off and unload the battery before cleaning the device.
- Using dry and clean lint-free cloth or hairbrush to keep the device and charger docking port clean.
- Avoid to use any chemical agent including detergent, alcohol, aerosol spray or oil preparations as cleaning solution.
- Dry your device completely after cleaning and before using it again.